

ELITE ROTATING ROUGH TERRAIN TELEHANDLER

GTH™-4020 ER



Specifications

| MODEL | | GTH™-4020R | |
|--|----------|--------------|--|
| MEASUREMENTS | Metric | Imperial | |
| Lifting height maximum | 19.64 m | 64 ft 5.5 in | |
| Lifting capacity maximum | 4,000 kg | 8,817.6 lbs | |
| Lift capacity at maximum height | 2,500 kg | 5,511 lbs | |
| Lift capacity at maximum reach | 250 kg | 551 lbs | |
| Forward reach maximum | 17.42 m | 57 ft 2 in | |
| Reach at maximum height | 4.20 m | 13 ft 9.5 in | |
| A Height | 3.02 m | 9 ft 11 in | |
| B Height at steering wheel | 2.13 m | 7 ft | |
| C Width | 2.43 m | 8 ft | |
| D Inside cab width | 78 cm | 2 ft 7 in | |
| E Track | 1.95 m | 6 ft 5 in | |
| F Wheelbase | 3.03 m | 9 ft 11.5 in | |
| G Length at stabilisers | 5.28 m | 17 ft 4 in | |
| H Length at fork-holder plate | 7.25 m | 23 ft 9 in | |
| I Ground clearance | 44 cm | 1 ft 5 in | |
| L Overall width, stabilisers extended | 5.01 m | 16 ft 5.5 in | |
| M Side rear overhang | 2.42 m | 7 ft 11 in | |
| N Front overhang | 4.82 m | 15 ft 10 in | |
| P Obstruction angle | 20° | 20° | |
| Q Departure angle | 20° | 20° | |

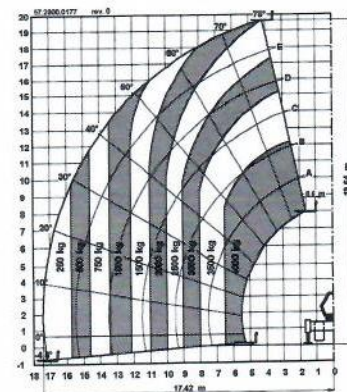
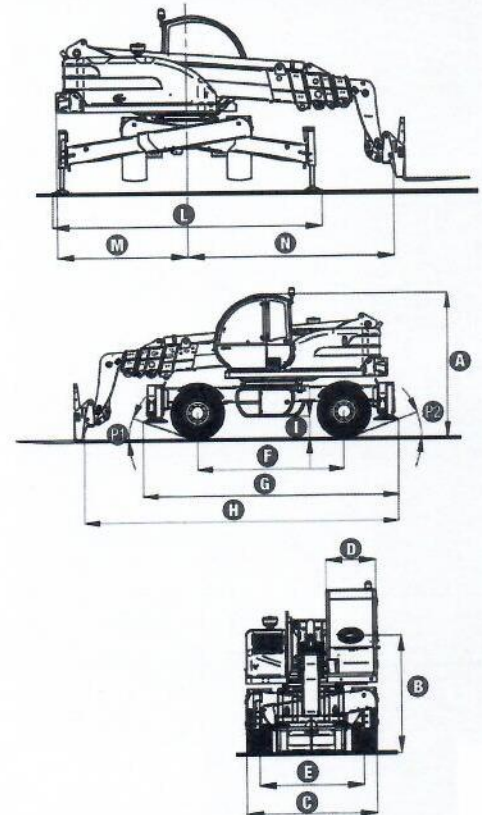
| PRODUCTIVITY | | |
|--------------------------------|------------------------------------|---------------------------------------|
| Inside/outside turning radius | TBC | TBC |
| Break-out force | 8,780 kg | 19,355 lbs |
| (with 800 L shovel SAE J 732) | | |
| Towing capacity at dynamometer | 8,280 kg | 18,252 lbs |
| Travel speed maximum | TBC | TBC |
| Fork-holder plate rotation | 146° | 146° |
| Chassis levelling on both axes | +/- 6° | +/- 6° |
| Floating forks | L 1,200 mm Section 120x50mm | L 3 ft 11 in Section 4.5 in x 2 in |
| Tyres (DIN 70631) | 18-19.5" PR16, 10 holes wheel disk | |
| Lifting/lowering speed | TBC | TBC |
| Extension/retraction speed | TBC | TBC |

| POWER | | |
|---------------------------|---|-------------------|
| Engine | Deutz TCD 2012 L04-2V 4-cylinder diesel, 118 hp (88 kW), Tier 3 | |
| Tank capacities | | |
| Petrol | 145 Lt | 38 gal |
| Engine oil | 11.5 Lt | 3 gal |
| Hydraulic oil | 230 Lt | 61 gal |
| Hydraulic output/pressure | 100 Lt/min-250 bars | 22 gal./3,625 psi |

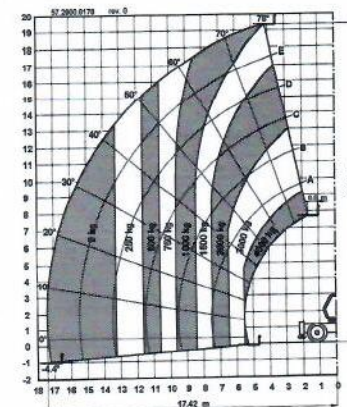
| WEIGHT | | |
|---------|-----|-----|
| Weight* | TBC | TBC |

| STANDARDS COMPLIANCE | |
|---|--|
| Operating cab conforms to ISO3471 (ROPS) and ISO3449 (FOPS) | |
| Low emission engine conforms to UE 97/68 directives. | |
| GOST R50950-96 | |

* Weight will vary depending on options and/or country standards



Lift capacity chart (with stabilisers, 90°)



Lift capacity chart (without stabilisers, 0°)

EN1459, Annex B

Features

STANDARD FEATURES

MEASUREMENTS

- 4,000 kg (8,817.6 lb) maximum lift capacity
- 19.64 m (64 ft 5.5 in) maximum lift height
- 17.42 m (57 ft 2 in) maximum forward reach

PRODUCTIVITY

- 4 x 4
- 4 - wheel steer
- 3 steering modes:
 - front wheel steer
 - crab steer
 - coordinated steer
- Power assisted steering
- Front and rear stabilisers
- Continuous rotation
- Hydrostatic transmission with variable displacement pump and motor
- Two speed mechanical gearbox, type 'shift-on-fly'
- Multi-function electro-proportional 4 x 1 joystick
- Limited slip differential on front axle
- Chassis levelling on front axle +/- 6°
- Floating forks
- Attachment holder plate with hydraulic quick coupling
- Door with two sections: steel on bottom, glass on top. Both sections open separately
- Boom length and boom angle indicators correspond to the load charts
- Man-platform pre-arrangement
- Adjustable suspended seat
- Large diameter steering wheel
- Front and rear windscreen wipers
- Sunshield
- Roof protection grid inside cabin
- Front & rear lights
- Side mounted engine for easy access to components
- Oil immersed, multi-disc brake on both axles
- Longitudinal stability control system with load monitor
- Visible display with coloured LEDs
- Audible alarm
- Automatic lock-out of boom extension and lowering
- Automatic lock-out of boom with load raised
- Lockout of stabilisers with boom raised
- Maintenance collar

STANDARD FEATURES cont.

POWER

- Deutz turbo diesel 118 hp (88 kW), Tier 3

TYRES

- 18-19.5" PR16. 10 holes wheel disc (DIN 70361)

OPTIONS & ACCESSORIES

PRODUCTIVITY

- Air conditioning
- Second hydraulic line on boom
- Concrete mixing bucket pre-arrangement
- Windshield protection grid
- Wiper on cab roof
- Adjustable spotlight on cab
- Adjustable spotlight on boom
- Spare wheel
- Foam filled tyres
- Complete radio remote control with joystick
- 20 ton hydraulic jack and 30 mm wheel box wrench

ATTACHMENT OPTIONS

- Loading shovel 800 L
- Concrete mixing bucket 500/800 L manual/hydraulic discharge
- Concrete mixing bucket 500 L with remote control
- Fork side-shift +/- 100 mm
- FEM 3 plate and forks kit
- Fixed hook on plate
- 4 m jib, 900 kg capacity
- 2 m jib with 2,000 kg capacity
- 4 m jib with 900 kg capacity with hydraulic winch
- 3000 kg hydraulic winch
- Brick holder basket
- Fixed or rotating man-platforms

UK

Millennium House
Brunel Drive
Newark NG24 2DE
UK
Tel: +44 (0)1476 584333
Fax: +44 (0)1476 584334

France

10, ZA de la Croix St. Mathieu
28320 Gallardon
France
Tel: +33 (0)2 37 26 09 99
Fax: +33 (0)2 37 26 09 98

Germany

Finienweg 3
28832 Achim/Bremen
Germany
Tel: +49 (0)4202 8852-0
Fax: +49 (0)4202 8852-25

Spain

Gaià 31, Pol. Ind. Plá d'en Coll
08110 Montcada i Reixac
Barcelona
Spain
Tel: +34 93 572 50 90
Fax: +34 93 572 50 91

Scandinavia

Importgatan 17
422 46 Hisings Backa
Sweden
Tel: +46 31 57 51 00
Fax: +46 31 57 90 20

Middle East

Terex Middle East
PO Box 282325, Dubai
U.A.E.
Tel: +971 4 339 1800
Fax: +971 4 339 1802
Email: InfoME@terex.com

Genie United States

18340 NE 76th Street
P.O. Box 97030
Redmond, WA
USA 98073-9730
Tel: +1 425 881-1800
Fax: +1 425 883-3475

Email: AWP-InfoEurope@terex.com

Distributed By: